

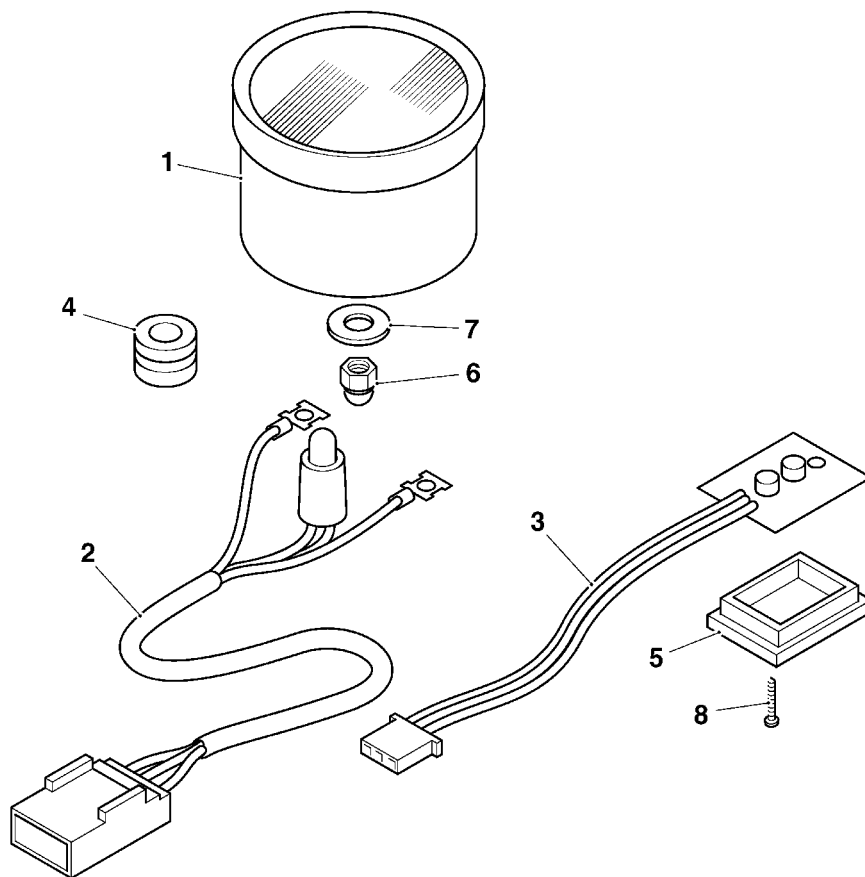
Clock Fitting Instructions - Bonneville America



! WARNING: Always have Triumph approved parts, accessories and conversions fitted by a trained technician of an authorised Triumph dealer. The fitting of parts, accessories and conversions by a technician who is not of an authorised Triumph dealer may affect the handling, stability or other aspects of the motorcycle operation which may result in an accident causing injury or death.

! WARNING: This clock is designed for use solely on the Triumph Bonneville America and should not be fitted to any other Triumph model or to any motorcycle of other manufacturers. Fitting this clock to any other Triumph model or to any motorcycle of other manufacturers may interfere with the rider and could affect the stability and handling of the motorcycle leading to an accident causing injury or death.

! WARNING: Throughout this operation, ensure that the motorcycle is stabilised and adequately supported to prevent the risk of injury from the motorcycle falling.

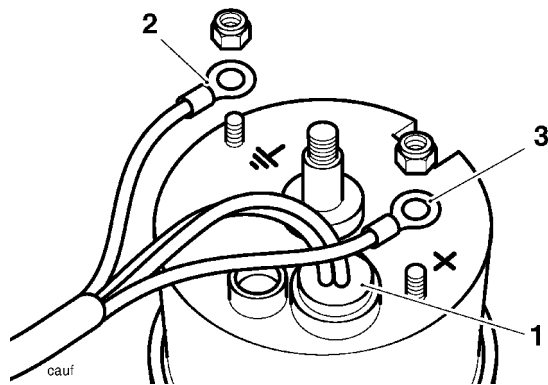


1 ..	Clock	1
2 ..	Clock harness	1
3 ..	Clock switch	1
4 ..	Grommet	1
5 ..	Adjuster cover	1
6 ..	M5 dome nut	1
7 ..	M5 washer	1
8 ..	Self-tapping screw	1

Clock Fitting Instructions - Bonneville America

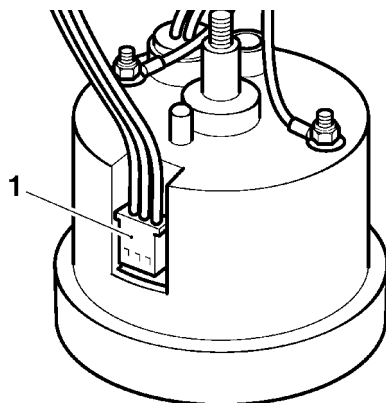


1. Remove the two nuts from the rear of the clock and discard the terminals.
2. Fit the clock harness to the clock, starting by pushing the illumination bulb into the hole in the rear of the clock. Using the two nuts removed earlier, fit the brown lead to the earth terminal and the purple lead to the positive (+) terminal.



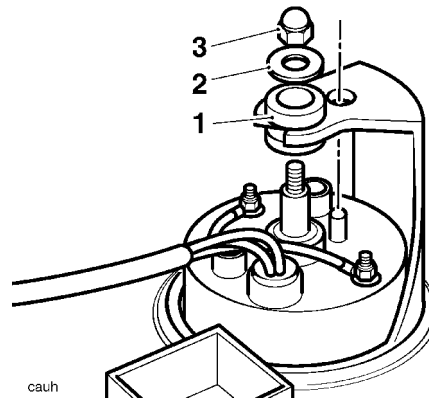
1. Illumination bulb
2. Earth (brown) terminal
3. Positive (purple) terminal

3. Fit the three pin connector on the switch cable to the clock as shown. The connector is uni-directional.



1. 3-pin connector

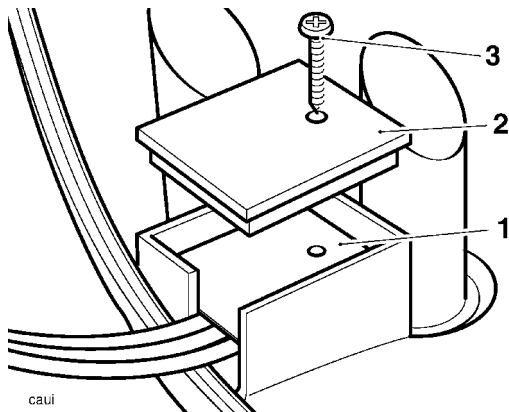
4. Disconnect the battery, negative (black) lead first.
5. Remove the warning light panel and, from the underside, push out the clock blanking plug.
6. Fit the grommet to the clock mounting post on the warning light panel. Align the clock location peg with the hole in the mounting post and secure using the domed nut and washer as shown. Tighten domed nut to **3 Nm**.



1. Grommet
2. Washer
3. Domed nut

7. Connect the clock wiring harness to the warning light panel as shown.

- 8 Position the clock adjuster in position, ensuring the two buttons are correctly aligned with the rubber buttons on the warning light panel. Secure in place using the adjuster cover and the self-tapping screw.



1. Clock adjuster
2. Adjuster cover
3. Screw

- 9 Refit the warning light panel to the fuel tank.
- 10 Reconnect the battery, positive (+) terminal first.
- 11 Clock adjustment is carried by depressing the clock adjustment buttons to the right of the clock. To advance the clock setting, depress the upper adjustment button. To retard the clock setting, depress the lower adjustment button. A single press of either button will change the clock setting by one minute. Pressing and holding either button will continuously change the setting.